



**coruche**  
*inSpira*

  
**coruche**  
município

03. Coruche  
06. Heritage  
20. Activities  
30. Gastronomy  
34. Events  
39. Useful Contacts

**DIVING INTO THE WATERS OF  
THE SORRAIA RIVER  
IS TO DISCOVER A SPACE OF  
NATURE AND LEISURE  
IN THE HEART OF RIBATEJO**

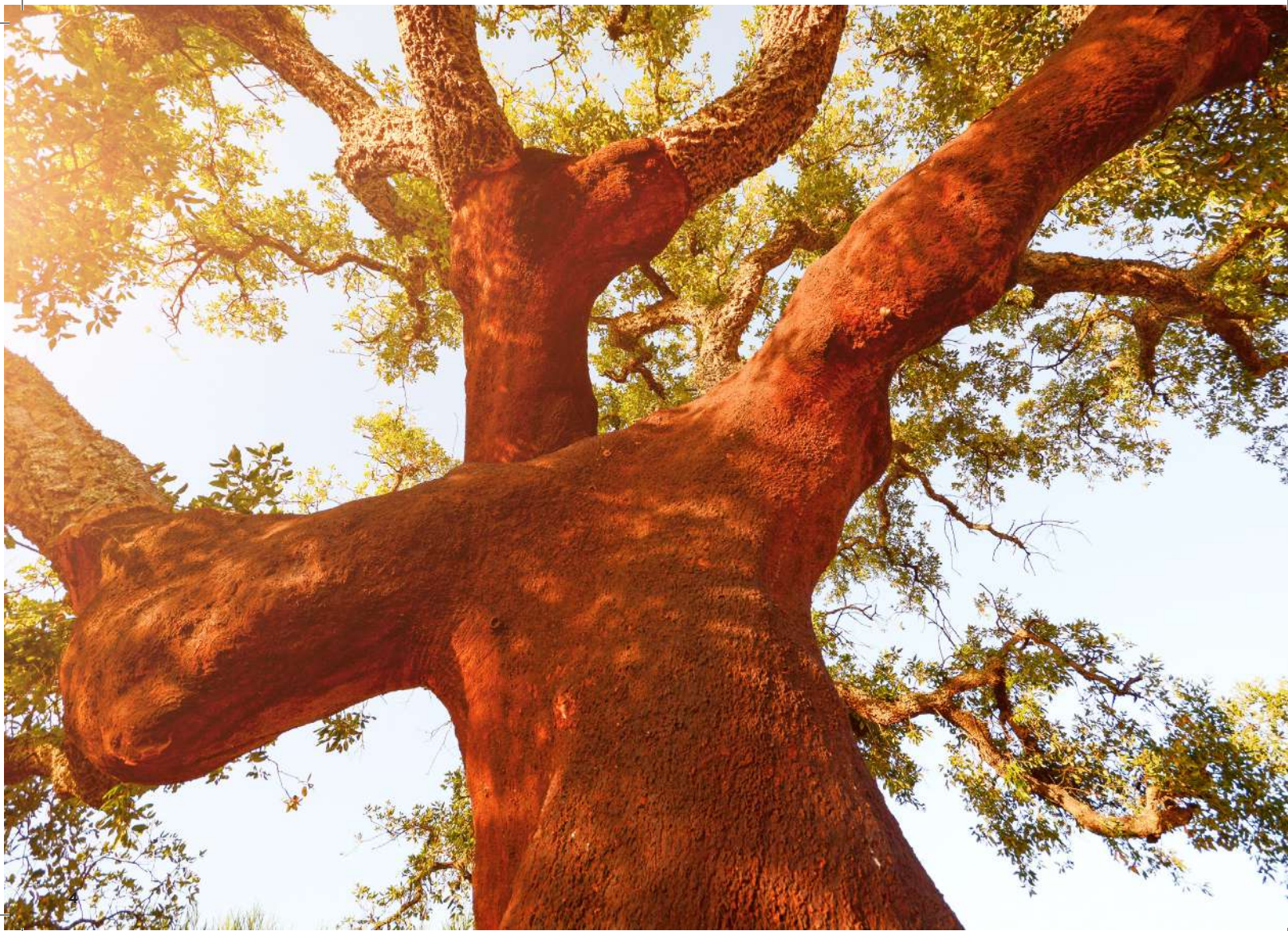


# Coruche

Wherever you look, the colours of the montado, the agricultural fields, and the river are always present, like a watercolour where golden, green, and blue tones stand out. With a Mediterranean climate, marked by the scents of wildflowers and the sounds of birds in the tilled plains.

A walk through the streets of the towns and villages of the municipality is the best way to get to know Coruche, or to lose yourself in the vast montado areas of cork oak and pine trees, framed by the agricultural plains of the Sorraia River valley. After enjoying the charms of the landscape, indulge in the scents and flavours of traditional Ribatejan cuisine. The menu features wild bull and veal meat, river fish, rice, pine nuts, and other local products.

Visiting Coruche means visiting one of the most inspiring regions of Portugal. Among places of great ecological interest, rich in biodiversity, walk through centuries of tradition. Discover the craftsmanship created by local artisans, which is expressed in basketry, textiles, and works with cork and clay. The built heritage is another highlight. The architecture of the houses, churches, the Museum, the museum centres, and the Cork and Cork Oak Observatory reveals glimpses of the coruchense soul and contributes to the uniqueness of this destination. Outdoor sports are also highly recommended. Here, you'll find exceptional conditions for cycling (MTB, gravel, road), hiking, trail running, canoeing, sport fishing, and many other activities.



## CURIOSITIES:



This is a land of many owls. Legend has it that the first King of Portugal, while passing through this territory, said: "From this day forward, it shall be called Coruche."

The oldest bell in Portugal, dating back to the 13th century, was found in Coruche and can be visited at the Coruche Municipal Museum.



Coruche is the **World's Capital of Cork**. Nearly 10% of the national cork is harvested in the municipality. The manufacturing units in Coruche produce around **6 million cork stoppers per day**, which are exported worldwide. The Cork and Cork Oak Observatory is a unique building, the only one of its kind in the country, covered with cork on the exterior and in the interior of the auditorium as a **tribute to the cork oak**.

The southern entrance to the municipality's main town is made through seven bridges in just 3 km, offering a unique experience of colours ranging from yellow to dark red across the Sorraia River.



# Heritage

## History of Coruche

**Coruche is the seat of one of the largest municipalities in Portugal,** covering an area of 1,115.72 km<sup>2</sup> and with approximately 17,350 inhabitants, subdivided into eight parishes. The municipality is bordered to the north by the municipalities of Almeirim and Chamusca, to the northeast by Ponte de Sor, to the east by Mora, to the southeast by Arraiolos, to the south by Montemor-o-Novo and the secondary territory of Montijo, to the west by Benavente, and to the northwest by Salvaterra de Magos.

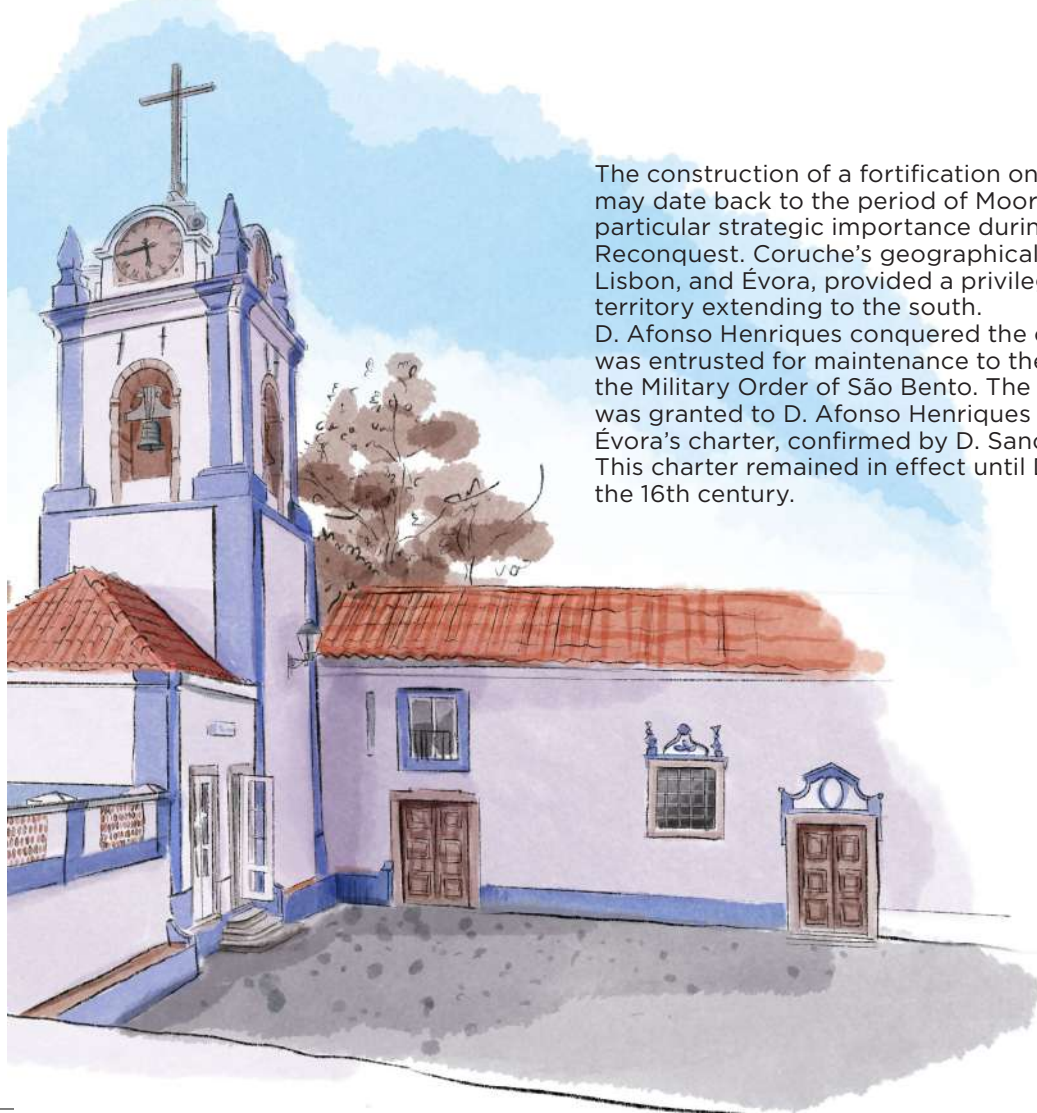
Rich in natural resources, the Sorraia River valley has been inhabited since the Palaeolithic period, although the most continuous archaeological records are only known from the Neolithic era, with the dawn of agriculture and the sedentarisation of ancient farming societies.

Roughly dating back to the 4th and 3rd millennia B.C., the megalithic complex of Coruche is located in the extreme southeast of the municipality

and consists of around three dozen monuments, which were excavated in the 1930s. The objects found in these structures are associated with the cult of the dead in ancient farming societies.

The Romans also left their mark on the Sorraia Valley, suggesting a concentrated settlement along the river and an intense rural occupation between the 1st and 5th centuries A.D. As a prime communication route, the river's navigability enabled the trade and transport of goods between regions. In fact, the cargo capacity provided by Roman ships ensured lower costs and faster transport, making a large part of the agricultural products that could not be sold overland profitable.





The construction of a fortification on the hill overlooking the village of Coruche may date back to the period of Moorish rule, but its location certainly assumed particular strategic importance during the long process of the Christian Reconquest. Coruche's geographical position, between the cities of Santarém, Lisbon, and Évora, provided a privileged observation post to control the vast territory extending to the south.

D. Afonso Henriques conquered the castle of Coruche in 1166, and in 1176 it was entrusted for maintenance to the Military Order of Freires of Évora, or the Military Order of São Bento. The first charter of the village of Coruche was granted to D. Afonso Henriques on May 26th, 1182, following the model of Évora's charter, confirmed by D. Sancho I in 1189 and by D. Afonso II in 1218. This charter remained in effect until D. Manuel I, who reformed the charters in the 16th century.

### **Nossa Senhora do Castelo Church Coruche**

This Marian sanctuary owes its name to the oppidum that once existed here, which held considerable strategic importance during the process of the Christian Reconquest. Legend has it that it was founded by the will of D. Afonso Henriques, in gratitude to Our Lady, after the conquest of the castle from the Moors, and this is the reason for the oil portrait placed on the pulpit wall. On the main altar, the image of Nossa Senhora do Castelo, Patroness of the town, stands with the Child at her side.



### **Misericórdia Church - Coruche**

The foundation of the Misericórdia of Coruche took place in the second half of the 16th century. The construction of the church began in 1565 and was completed in 1584. The current façade and interior changes are the result of a significant series of works that began in the second half of the 17th century. Generally speaking, the original mannerist structure has been preserved, but the vaulting and ornamentation are already in the Rococo style, making it a Monument of Public Interest.

### **São Mateus Church - Erra**

The church of the former Mercy of Erra, dated 1691 and engraved on the closing arch of the transept, assumed the role of parish headquarters when the old 16th-century main church could no longer be used. Almost the entire collection of liturgical implements was then moved to the current temple, including the sculpture of the patron saint, São Mateus, and the notable holy water font known as 'Erra Velha.' The interior, with its single nave, features the classic side choir typical of Misericórdias.

### **São João Batista Church Coruche**

The mother church, inaugurated in 1958, is a project by architect Vasco de Moraes Palmeiro. It features a modern and austere design, entirely white and filled with light. The church has two tall bell towers, needle-shaped with a quadrangular base. Crowning the main portico is a sculptural ensemble depicting São João Batista. The main altar showcases an Indo-Portuguese tabernacle and a statue of the Crucified Christ. The use of reddish-pink marble creates a dignified atmosphere for prayer.



### **Santo António Church - Coruche**

It is a temple with a single nave, facing south, featuring a simple crossing arch and a chancel with a vaulted ceiling. Its location, above Largo de Santo António, marks the beginning of Rua Direita, which would have been the western entrance to the medieval village. It most likely succeeded the São Miguel Church, documented from 1222. In the 17th century, the prince of archangels was replaced as the patron saint by Santo António. The interior tilework dates back to the 17th century.



### **Santa Ana Church - Santana do Mato**

Built in the 16th century, the church of Santana do Mato became a vast rural parish of a scattered habitat, and was built in honour of Santa Ana, who is said to have appeared here, among dense oak trees, in the middle of the woods. Already in the middle of the 17th century, this modest temple was enhanced by a tile covering of exceptional richness, preserving the popular manueline architecture characteristics. Located in the churchyard there is a 17th century crucifix.



### **Santa Justa Church – Couço**

The Santa Justa Church, with its privileged position overlooking the Sorraia Valley, is a rural temple of simple character, featuring a modest baptistery topped with a domed roof. It may have been built on the site of a former pagan sanctuary, suggested by the presence of a Roman inscription on the votive altar found here, possibly dedicated to Carneu Calanticense, an indigenous deity who protected flocks and shepherds, and whose main cult centre was located in Santana do Campo, Arraiolos.

### **São José da Lamarosa Church Lamarosa**

It is a simple, single-nave temple, with a tombstone above the main façade door referencing the proclamation of the Dogma da Conceição. It has a main altar and two side altars, both lacking an altarpiece, with the fronts of all three altars adorned with 17th-century tiles featuring blue and yellow ornaments on a white background. On the main altar stands the image of Jesus Christ on the Cross, with a gilded metal tabernacle at His feet.

### **São Pedro Church – Coruche**

This church appears in historical records from 1222. However, despite its mediaeval origins, which are associated with the 1287 bell, the current structure has undergone significant modifications, the most recent of which dates to the 17th century, unlike the 19th-century bell tower in the churchyard. The interior is entirely covered with 17th-century patterned tiles. In the chancel, which has a vaulted ceiling, the altar frontal stands out, portraying the Garden of Paradise, with a central medallion featuring the image of São Pedro.





### **Nossa Senhora do Rosário Monastery Couço**

The Nossa Senhora do Rosário Monastery is part of the Belém Monastic Family, dedicated to the Assumption of the Virgin and São Bruno, and is home to the respective Portuguese community. It offers welcoming spaces for groups or individuals who wish to learn about and participate in the prayer life of the Monjas, in a spirit of retreat and listening to God's Word.



### **Pillory - Coruche**

Symbol of power and municipal autonomy, the Manueline Pillory of Coruche was originally located next to the Town Hall, on the west side of the current Praça da Liberdade. It was dismantled prior to February 1908. The current pillory, dating from the 1940s, is a typical example of Gothic Manueline revivalism, which is based on original fragments. The capital is adorned with the armillary sphere, the Cross of Avis, the coat of arms, and the village's insignia.

### **Sorraia River**

The Sorraia River is formed at the confluence of the Sor and Raia rivers. It flows through the entire municipality of Coruche from east to west, creating a natural line that divides it in two. A source of life, the river has been fundamental to the settlement of early human populations in the region and remained the primary means of communication until the early 20th century. In Coruche, the riverside area invites visitors to engage in sporting activities, such as sport fishing, as well as recreational and leisure pursuits, all set in a privileged landscape where urban and natural elements coexist in healthy harmony.

### **Metal bridges in Coruche**

The southern entrance to the village of Coruche is through seven bridges over just 3 km, in a unique experience of colour between the yellow and dark red that altogether create one of the iconic images of the municipality's main town. The largest, the General Teófilo da Trindade Bridge, comprises three independent spans, each 40 metres in length, constructed of metal. The first two were built in 1930, while the third span, constructed in 1980, replaced the previous deck that had collapsed the year before.

### **Sorraia Valley Irrigation Work**

The Sorraia Valley Irrigation Works concluded in 1959, enables the use of storage water on the Maranhão and Montargil dam and the respective distribution through pumping stations and irrigation canals. It represents the most significant transformation in agricultural exploitation of the valley. Rainfed crops took a backseat, with irrigated crops being exploited since then, where corn, rice and tomatoes predominate. Between the months of April and September, rice and corn fields can be visited throughout the municipality, offering good conditions for observing the landscapes and fauna associated with this type of cultivation.

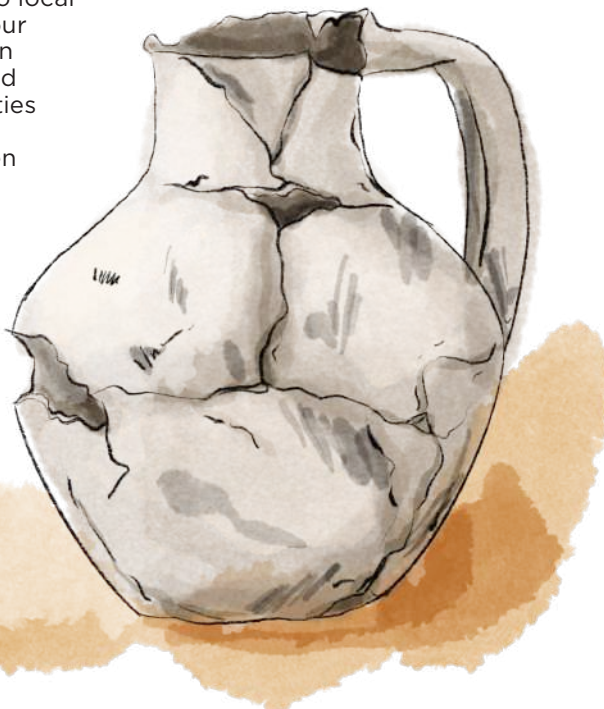
### **Sorraia Pedestrian Bridge Dam**

One of the main objectives of the dam is to maximise the maintenance of a water level along the banks of the Sorraia River, ensuring conditions for fish migration by incorporating a passage device (fish ladder). Visits to the fish ladder require prior booking via: +351 243619072 / [turismo@cm-coruche.pt](mailto:turismo@cm-coruche.pt).



### **Municipal Museum of Coruche**

Opened in 2001, the Municipal Museum of Coruche (MMC) fulfils the mission to actively contribute to local development and works in favour of a collective identity, based on the heritage of the historical and cultural values of the communities that have long inhabited this territory. Since 2002, it has been a member of the Portuguese Museum Network (RPM) and has built a reputation for excellence with organisations such as the Portuguese Association of Museology (APOM) and the General Directorate of Cultural Heritage (DGPC). It is regarded as a territorial museum, aimed at identifying, inventorying, safeguarding, and disseminating local heritage.



Opening Hours: Summer, from 10:30 to 13:00 and from 14:30 to 18:00 / Winter, from 09:30 to 13:00 and from 14:30 to 17:00. Closed on Mondays and public holidays, except August 15th and 17th (municipal holiday).  
Rua Júlio Maria de Sousa, 2100-192 Coruche +351 243610820 |  
[museum.municipal@cm-coruche.pt](mailto:museum.municipal@cm-coruche.pt) | [museum-coruche.org](http://museum-coruche.org) [facebook.com/Museu-Municipal-de-Coruche-105573428051945](https://www.facebook.com/Museu-Municipal-de-Coruche-105573428051945)



### Rural Centre of Coruche

Center for Arts, Crafts, and Traditional Knowledge. Open to the public since 2018, this is a space entirely dedicated to agricultural heritage, arts, crafts, and traditional knowledge, that has the mission to safeguard and value the agricultural heritage of the municipality, as well as the memories and practices related to the subject, allowing its dissemination from a dual perspective of education and promotion of local development.

Summer hours (from the end of March to the end of October): Tuesday to Friday from 2:30 PM to 6 PM, Saturday from 10:30 AM to 1 PM and from 2:30 PM to 6 PM. Open on the holidays of August 15th and 17th (municipal holiday). Winter hours (late October to late March): Tuesday to Friday from 2:30 pm to 5 pm, Saturday from 9:30 am to 1 pm and from 2:30 pm to 5 pm. Sundays and mornings by prior appointment. Closed on Mondays. Guided tours for groups by prior appointment via: [nucleo.rural@cm-coruche.pt](mailto:nucleo.rural@cm-coruche.pt) or +351 243610820. Rua dos Bombeiros Municipais, 18-A, 2100-179 Coruche



### Bullfighting Center of Coruche

Opened to the public in August 2010, in the former CTT building, with a view to safeguarding, portraying and enhancing the municipality's bullfighting culture. It houses the permanent exhibition "Bullfighting of Coruche - History, Art, Tradition," involving the community in understanding and enjoying this theme.

Rua Júlio Maria de Sousa, 21, 2100-192 Coruche. Schedule visits through: [museu.municipal@cm-coruche.pt](mailto:museu.municipal@cm-coruche.pt) or +351 243610820.





### **Lamarosa Culture House**

Opened in August 2021, the Lamarosa Culture House is located in the building of the old nursery. The space, whose history dates back to 1920, has served various purposes over the years, and today it is dedicated to history, memory, customs, and local traditions, asserting itself as a cultural and social space for the community of the parish of São José da Lamarosa.

Opening Hours: Monday to Friday (except public holidays), from 10:00 to 13:00 and from 14:00 to 18:00.  
Largo de São José,  
2100-405 São José da Lamarosa  
+351 243248553.

### **Salgueiro Maia School-Museum**

Opened to the public in October 2009, this school vividly evokes memories of school days by recreating a classroom from the Estado Novo period. It provides a space for learning and reflection on Education and its associated values, establishing a counterpoint between the period before and after April 1974. Captain Salgueiro Maia is an iconic figure of the Revolution, having begun his schooling in São Torcato, personifying, in this context, the turning point in the course of History, where the concept of citizenship began to incorporate the values of democracy and freedom.

Opening Hours: open on the last Sunday of the month (except public holidays).  
Rua da Escola, 2100-054 São Torcato.  
To schedule visits, please contact:  
museu.municipal@cm-coruche.pt  
or +351 243610820.

### **Coruche Municipal Library**

The Coruche Municipal Library, opened on 17 June 1962, houses a collection of approximately 21,000 literary works and has also included the Dr. Américo Durão Reading Room, located in the parish of Couço, since 2003. In 2018, it began to operate as part of a network with the Lezíria and Vale do Tejo Community Libraries, under the acronym RIBLT (Intermunicipal Network of Lezíria do Tejo Libraries), and at the end of 2021, it joined the National Network of Public Libraries (RNBP).

Opening Hours: Monday to Friday (except public holidays), from 9:00 a.m. to 5:30 p.m.  
Praça da Liberdade, 13, 2100-114 Coruche  
+351 243610212  
biblioteca@cm-coruche.pt  
Online catalogue:  
biblioteca-coruche.pt / facebook.com/  
bibliotecamunicipaldecoruche



### **Megalithic monuments - Couço**

The Coruche megalithic complex stands out for the typological diversity of its structures (dolmens, antas, and cists) and for the artefacts associated with them. Roughly dating back to the 4th and 3rd millennia BC, the monuments are located in the extreme southeast of the Coruche municipality, in a deforested area geographically situated in the northern part of Central Alentejo. The Coruche Megalithic Route includes Água Doce, Azinhal, Vale de Gatos, Chapelar, and Martinianos. To undertake this itinerary, please contact the Municipal Museum of Coruche: +351 243610820 | [museum.municipal@cm-coruche.pt](mailto:museum.municipal@cm-coruche.pt)

### **Crown Bridge - Coruche**

The Crown Bridge, named for being maintained by the crown's revenues, features an inscription in latin dated 1828, set beneath a crown and shield emblem. It is a public utility structure corresponding to a (re) construction from the reign of King Miguel. The bridge's entire structure is built from brick, with three arches and cutwaters on both sides. It is classified as a Property of Municipal Interest.

### **The Cork and Cork Oak Observatory**

Opened in 2009, this is an innovative, provocative, and poetic building designed by Architect Manuel Couceiro, featuring an organic structure that metaphorically represents the cork oak as a living element. The entire building is covered in cork and aims to serve as a hub for promoting cork oak woodlands as an ecological niche of great value, working in partnership with producer associations, universities, researchers, and business organisations to achieve this goal.

Opening Hours: Monday to Friday, from 9:00 am to 1:00 pm and from 2:00 pm to 5:30 pm.  
Weekends and holidays by appointment.  
Address: Zona Industrial Monte da Barca, Lote 41, 2100-051 Coruche  
Telephone: +351 243611210 | Email: [observatorio@cm-coruche.pt](mailto:observatorio@cm-coruche.pt)





### **Cork oak forest and cork-growing territory of Coruche**

The Montado (oak grove) is a remarkable example of renewal and sustainable exploitation, making Coruche even more special, proudly claiming the title of “World Cork Capital”. Around 50% of the municipality is covered by forest, consisting of a mixed montado of cork oak and stone pine, renowned both for the quality and economic value of the products it generates—wood, cork, and pine nuts—and for its rich biodiversity of fauna and flora. It also contributes significantly to the environment and holds substantial combined ecological value. The world of cork has evolved into modernity while preserving its essence. Today, the cork-growing communities and their landscapes form a unique mosaic of great natural and anthropological richness, offering a magnificent setting for vacation and leisure activities. In November 2021, the General Directorate of Cultural Heritage (DGPC) officially included the “Cork Extraction in the Municipality of Coruche” in the National Inventory of Intangible Cultural Heritage, thereby recognizing it as Cultural Heritage of Portugal.

More information at:  
[visitteritorioscorticeiros.pt](http://visitteritorioscorticeiros.pt)  
[montadodesobroecortica.pt](http://montadodesobroecortica.pt)

### **Coruche Municipal Market and Municipal Gallery**

In operation since July 9, 1944, the Municipal Market offers the best local products daily, showcasing the flavours of our land from garden to table. The space also features a gallery that hosts various temporary exhibitions, presentations, discussions, and lectures. Additionally, the building houses a mural dedicated to the theme of “Rural Traditions”.

Opening Hours of the Municipal Market:  
Monday to Saturday (except holidays), from 07:00 am to 1:00 pm. Address: Street 5 de Outubro, 2100-228 Coruche  
Opening Hours of the Municipal Gallery:  
according to the opening hours of the Coruche Tourism Office

### **Monte da Barca Dam**

Located approximately 9.5 km from Coruche, it features a reservoir that is around 2.5 km long and an area of approximately 884 hectares of cork oak and pine forests. This is an ideal place to enjoy fresh air and tranquillity, serving as a space for various sports such as fishing and canoeing.



### **Coruche Bullring**

The Coruche Bullring, a first-class venue, is the result of the initial work of the Coruchense Bullfighting Society, which was subsequently replaced by the Bullring Construction Commission. Construction began in 1956, and it was inaugurated by the President of the Republic, Almirante Américo Tomás, on August 14, 1966, to commemorate the 8th centenary of the conquest of Coruche by D. Afonso Henriques. On August 16, 1971, it was handed over to the institutions responsible for its management: the Brotherhood of Our Lady of the Castle, the Santa Casa da Misericórdia de Coruche, and the Lar de São José. In 2012, the Municipality of Coruche declared bullfighting an Intangible Cultural Heritage of Municipal Interest.

### **Coruche Tourist Office & The Montado Store**

Integrated within the same building as the Municipal Market, this space allows for the discovery of good reasons to visit Coruche and simultaneously enables every citizen to visit and acquire local products, crafts, and many other local elements.

Tourist Office opening hours (open every day, except holidays): From 9:00 am to 12:30 pm and from 2:00 pm to 5:30 pm. Telephone: +351 243619072 [posto.turismo@cm-coruche.pt](mailto:posto.turismo@cm-coruche.pt) [pt.turismo@cm-coruche.pt](mailto:pt.turismo@cm-coruche.pt)

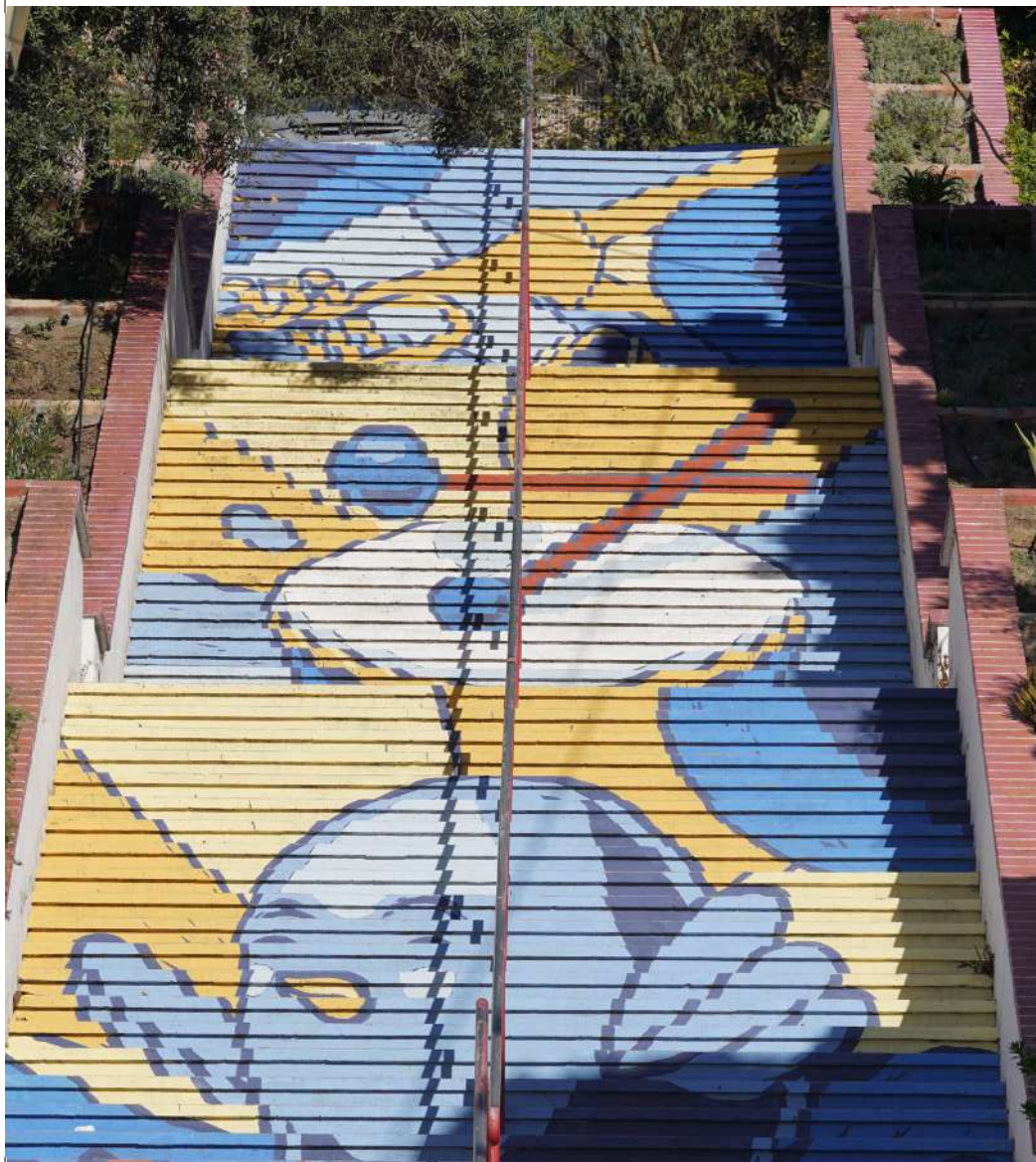
### **April 25 Garden**

Located along the banks of the Sorraia River, the April 25 Garden was inaugurated on May 28, 1948, and has recently undergone requalification work. It features various leisure spaces and recreational structures, while also allowing visitors to contemplate the surrounding areas, including both the natural and urban landscapes, and it includes an amphitheatre.



### **Left Bank of the Sorraia River**

The creation and requalification of support infrastructures, natural resource conservation areas, trails, and observation structures on this bank have allowed for the addition of another leisure site, featuring the new Parque de Merendas, and sports, with a redeveloped area that enables walking and running between the river and the marshland.



### Urban Art

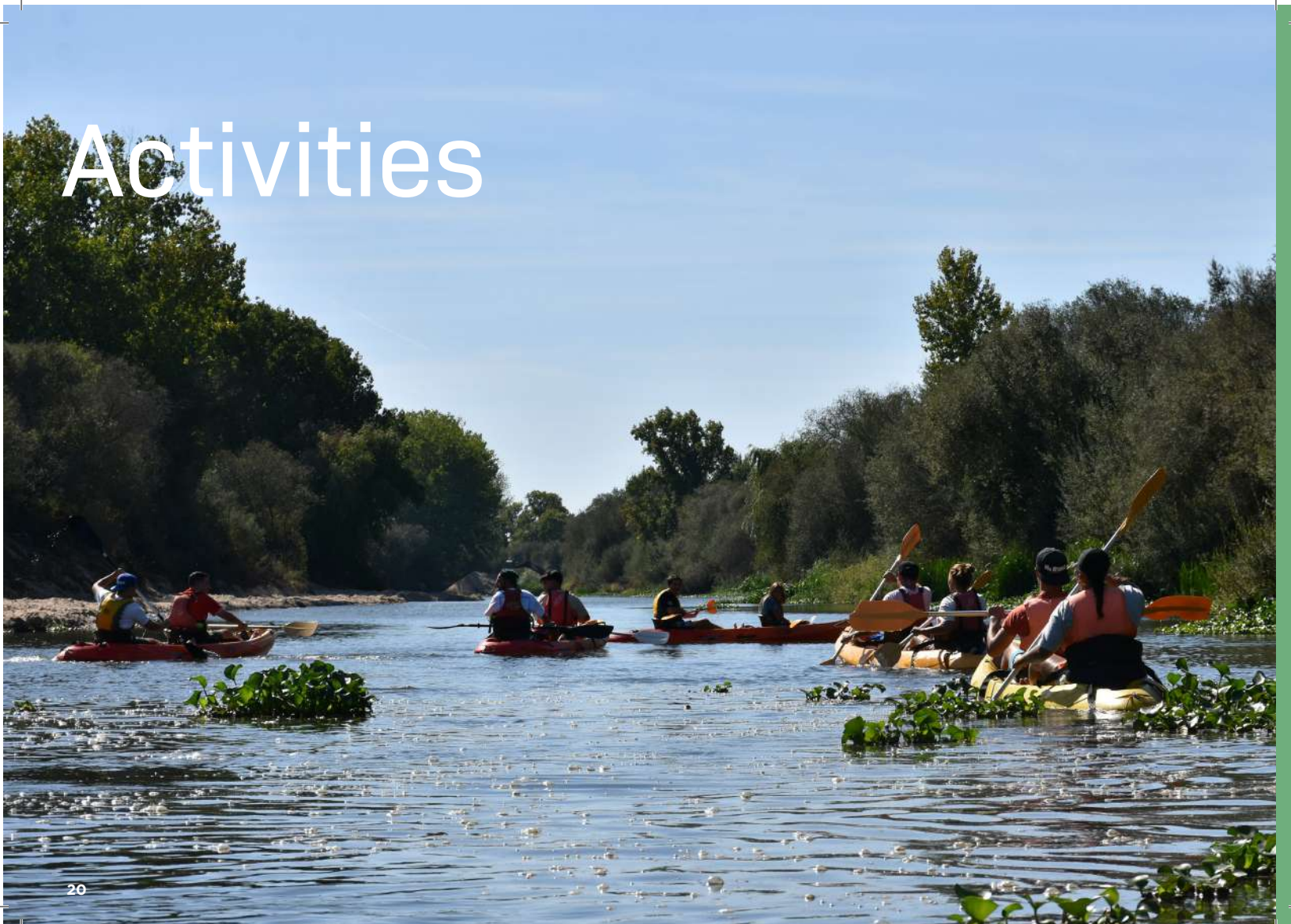
Throughout the various editions of the Biennial of Coruche, authentic works of art, unique and of recognized value, were created along the village streets. From sculptures to murals and through artistic installations, several elements bring colour and life back to Coruche, which, by combining with art, give it an impactful appearance.

SCAN THIS QR CODE  
TO LEARN MORE ABOUT  
URBAN ART IN CORUCHE



[visitcoruche.pt/arteurbana](https://visitcoruche.pt/arteurbana)

# Activities



COME AND FEEL THE POSITIVE  
INSPIRATION OF CORUCHE!



Between the pleasures of the table and the stunning Ribatejo landscapes, along with the numerous outdoor activities, a visit to Coruche is always surprising.

Do sports in contact  
with nature, either  
on the river or  
in the Montado.  
Allow yourself to be  
surprised by these and  
many other attractions  
of this municipality.



Let yourself be carried away on a tranquil kayak tour through the serene waters of the Sorraia River, **or relax horseback riding while discovering the natural beauty of the montado** (cork oak forest).



Coruche is close to major urban centres, but far enough away to offer you a **quality life, calmness, peace, and serenity.**

### Ballooning

A ballooning trip offers you a different perspective of the world and an opportunity to fly with the flavour of the wind. The surprise begins as soon as the balloon starts to inflate, and you will see, for the first time, its impressive size. Once the balloon takes shape, it's time to hop into the basket because the journey to an unknown destination will begin, but fun and wonder are guaranteed.

Balloon flights in Coruche:

**Windpassenger** (Passageiros do Vento)  
Zona Industrial Monte da Barca Lote 37, 2100-011 Coruche  
+351 243660006 / +351 927585536  
geral@windpassenger.pt  
windpassenger.pt  
facebook.com/windpassenger

### **National Cycle Tourism Network**

The Coruche municipality hosts sections of two ecopaths in the network: Ecovia 2 Rios, Quintas & Florestas, from Monção to Lagos, which crosses the municipality from North to South, and Ecovia 12 - Pântanos & Planícies, from Santa Cruz to Badajoz (Spain), which crosses the municipality from West to East.

Information and acquisition of the trail guide at: [www.ecovias.pt](http://www.ecovias.pt)

### **Cycling**

There are routes in Coruche to suit all preferences, from the more relaxed one along the Sorraia River to the more technical trails through the ups and downs of the cork oak forest. Try one of the various MTB and gravel events that take place annually in Coruche, with a highlight being the 24-Hour MTB CCH.

Associations and Organising Companies:

#### **Strix Bike Team**

[strixteam.com](http://strixteam.com)  
[strix.biketeam@gmail.com](mailto:strix.biketeam@gmail.com)  
[facebook.com/strixteam](https://facebook.com/strixteam)

#### **Montibike**

[montinhospegos.blogspot.pt](http://montinhospegos.blogspot.pt)  
[facebook.com/montibike.cscmp](https://facebook.com/montibike.cscmp)

#### **ARZ Bike Team**

[arz@sapo.pt](mailto:arz@sapo.pt)  
[facebook.com/ARZ-Bike-Team-410566588998560](https://facebook.com/ARZ-Bike-Team-410566588998560)

### **Cracks do Pedal**

[17sersil@sapo.pt](mailto:17sersil@sapo.pt)  
[facebook.com/Craks-do-Pedal-222021254550687](https://facebook.com/Craks-do-Pedal-222021254550687)

### **Já T'agarro**

[jatagarro.com](mailto:jatagarro.com) | [jatagarro@gmail.com](mailto:jatagarro@gmail.com)  
[facebook.com/jatagarro](https://facebook.com/jatagarro)

### **Corklands**

Cycling, walking, running, hot air ballooning, and off-road activities  
+351 960386079 | [info@latitude-longitude.pt](mailto:info@latitude-longitude.pt)  
[corklands.pt](https://corklands.pt) | [facebook.com/corklands](https://facebook.com/corklands)

### **Erra Coruche Cyclin'Portugal Centre**

The establishment of the Erra Cyclin'Portugal Centre features six routes totalling 306 km and aims to enhance and capitalise on the excellent characteristics that the municipality has for cycling practice, which are widely recognised by enthusiasts of this sport. The routes, all of which are gravel, include numerous connections and combinations that allow access to different areas of the municipality, providing a panoramic view of the region.

For more information, visit [www.cyclinportugal.pt](http://www.cyclinportugal.pt)

### **Nautical activities on the Sorraia river Búzios / DS Systems**

Búzios, in partnership with the tourist entertainment operator DS Systems, organizes canoe trips down the

Sorraia River, covering a distance of approximately 8km. accompanied by a guide. They also offer canoeing trips on any body of water in the municipality and diving baptisms in the Municipal Swimming Pools of Coruche or in other locations that provide suitable conditions.

Prior booking is required. For information, contact [buzios@buzios.org.pt](mailto:buzios@buzios.org.pt)  
+351 917 169 695

### **River Route**

This tour operator invites you to experience active tourism and adventure in the heart of Ribatejo, in Coruche. SUP (stand-up paddle) and kayak tours on the Sorraia River, trail biking through the cork oak forest, wine walks among local vineyards, and team-building activities on nature.

Prior booking required: [hello@riverroute.pt](mailto:hello@riverroute.pt) or +351 910 345 895

### **Trail running**

In Coruche, there is not only a diverse range of trails, paths, and streams, with open or winding routes that provide excellent conditions for this sport, but also, in an urban context, it is possible to take advantage of the village's terrain for this purpose. Trail running events are held throughout the year, such as the Cork Trail, the Urban Trail - Caminhada da Coruja, and the Treino Convívio do Sorraia to Charneca.

Associations and Organising Companies:

**Centro Social, Cultural e Desportivo de Montinhos dos Pegos - Trail da Coruja e Caminhada**

montinhosdospegos@gmail.com  
+351 935914780  
facebook.com/montinhosdospegos

**Corklands**

Cycling, walking, running, hot air ballooning, and off-road activities  
+351 960386079 | info@latitude-longitude.pt  
corklands.pt | facebook.com/corklands



**Forest Tour - A day in the countryside**

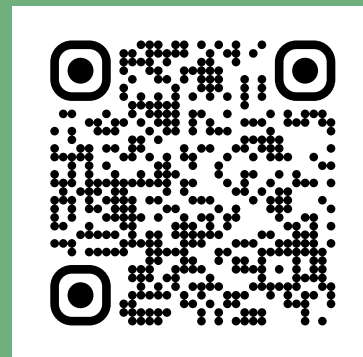
Experience a walk through the forest to learn about sustainable management and discover life among cork oaks, pine trees, and pastures. An invitation to connect with nature and experience the true spirit of the countryside.

Monte Do Areeiro  
+351 919 359 980 / +351 213 015 494  
contacto@montedoareeiro.com  
montedoareeiro.com

**Municipal Network of Hiking Trails**

The territory of Coruche presents a significant set of attractions for hiking, with particular emphasis on the immense natural heritage based on cork oak and cork forests, the built and intangible religious heritage, and the diversity of landscapes ensured by the vast size of the municipality, where rural parishes populate areas of great cultural richness. Coruche offers hikers a complete Municipal Network of Hiking Trails composed of 9 diverse routes in Coruche, Erra, Fajarda, Biscainho, Branca, Lamarosa, Santana do Mato and Couço.

Coruche's walking routes are part of the Geonatour smartphone application: visitors can discover the charms of the routes by receiving various information of interest on their devices and can use tools to support their walk.



visitcoruche.pt/percursospedestres



### Road to Santiago - Alentejo and Ribatejo

The municipality of Coruche is represented in stages 13 (Vendas Novas / Branca) and 14 (Branca / Santo Estêvão) of the Portuguese Central Route of the Road to Santiago. The parish of Branca holds a privileged position, thanks to its natural resources offering several reasons for tourist visits, whether because of the fauna and flora that can be observed in the cork oak forests or because it is very close to the Ribeira de Lavre, a watercourse with high biodiversity.

More information at:  
[www.caminhosdesantiagoalentejoribatejo.pt](http://www.caminhosdesantiagoalentejoribatejo.pt)

### Sorraia River Beach

Inaugurated in 2021, the Sorraia River Beach has a total area of 1,771.04 m<sup>2</sup> and is classified with a blue flag. Located on the right bank of the river next to the Parque do Sorraia in Coruche, it has a potential capacity for 230 people, fulfilling the requirements regarding beach management, bathing facilities, and assistance to bathers.

More information at:  
[visitcoruche.pt/praiافلuvialsorraia](http://visitcoruche.pt/praiافلuvialsorraia)

### EN2

The Association of Municipalities along the National Road Route 2, in which Coruche is located, launched the “EN2 Passport” so that tourists can receive stamps for the places visited along the route, taking advantage of all the scenic and heritage potential that the route has to offer. You can obtain and stamp your EN2 Passport at the Tourist Office, Municipal Museum, Municipal Fire Department, Observatory of Cork Oak and Cork, and the Coruche Municipal Council Delegation in Couço (it is also possible in this parish to stamp your passport at restaurants and local accommodation).



## Municipal Pools

Comprising four aquatic tanks—two covered and heated, measuring 16 m and 25 m, and two uncovered, one measuring 50 m and the other for diving—as well as a splash pad (uncovered), the Coruche Municipal Swimming Pools complex offers excellent conditions for swimming and leisure.

### Opening Hours:

Outdoor Pool:  
according to the bathing season with dates set annually; from Tuesday to Sunday from 10:00 am to 8:00 pm; closed on Mondays.

### Covered Pools:

according to the operating calendar set annually; from Monday to Friday from 08:30 am to 10:30 pm; on Saturdays from 08:30 am to 01:00 pm; closed on Sundays and public holidays; from 15th June to 31st July and from 1st September to 14th September

### 25m Tank:

Monday from 5:30 pm to 10:30 pm;  
from Tuesday to Friday from 1:00 pm to 3:00 pm and from 5:30 pm to 10:30 pm;  
Saturday from 10:00 am to 12:30 pm  
Rua Capitão Salgueiro Maia, Coruche  
+351 243 610 590  
piscinas@cm-coruche.pt

## Tennis and Padel Courts

The Coruche Tennis and Padel Courts are part of the set of sports facilities in the Municipality of Coruche, and their purpose is to provide a dedicated space for the practice of these sports in all their aspects.

### Winter Schedule:

from 15 September to 14 June: Monday to Friday from 8:30 am to 10:00 pm and Saturdays and Sundays from 8:30 am to 12:30 pm.

### Summer Schedule:

from 15 June to 14 September: Tuesday to Sunday from 10:00 am to 7:00 pm.

Rua Capitão Salgueiro Maia, Coruche  
+351 243 610 591

piscinas.rececao@cm-coruche.pt  
cm-coruche.sportstudio.pt

APP (Android and iOS):  
Coruche - Tennis & Padel

### Padel Club of Coruche:

+351 932 491 020  
clubepadelcoruche@hotmail.com  
facebook.com/cpclclubepadelcoruche

CAD Coruche - Tennis School: +351 934 235 229

cadcoruche@gmail.com





## Horse Riding and Equestrian Tours

### **CEART - António Ribeiro Telles Equestrian Centre**

The António Ribeiro Telles Equestrian Centre is a bullfighting and equestrian complex consisting of a covered arena with all the support for the horses and social areas that simultaneously serve to welcome visitors, a bullring, and a pedagogical farm. The centre conducts scheduled guided tours to the Ganadaria Vale do Sorraia and the Stud Farm, both located at Herdade da Torrinha, visits that can be complemented with a catering support service.

Herdade de Vale Casas, 2100-651  
Biscainho, Coruche  
+351 914 604 089 / +351 939 435 684  
geral@ceart.pt | www.ceart.pt

### **Horseback Riding at Monte do Areeiro**

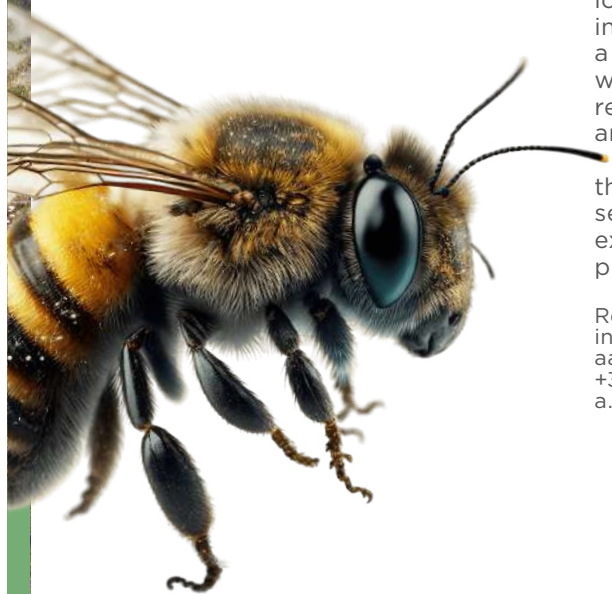
Equestrian experiences accessible to beginners and experienced riders. In the outdoor riding arena, accompanied by an instructor, discover your connection with the horse and, if you wish, also enjoy countryside rides or riding lessons.

Monte do Areeiro, Coruche, EN 114, km 100.7  
+351 919359980  
contato@montedoareeiro.com  
www.montedoareeiro.com

### **Vale Pau Stud Farm**

Situated in a 20-hectare estate with 22 boxes, a covered riding arena of 600 m<sup>2</sup>, and two uncovered arenas of 375 m<sup>2</sup> each, the Vale Pau Stud Farm also has a cross-country field and accommodates horses for training and teaching.

Vale Pau Stud Farm, Santana do Mato,  
2100-675 Coruche / +351 935676678  
valepauneto@hotmail.com



### **The Bee and the Honey with «Terra das Abelhas»**

The Apicultural Interpretative Atelier, located in an ecological reserve area in Escusa, Coruche, is integrated into a 100-hectare space in partnership with Carapinheira, a biodiversity reserve. It features two apiaries with around 100 hives, supported by an educational and recreational area that includes a knowledge studio, a sensory studio, a wax workshop, an extraction unit, and a picnic area for picnics and relaxation.

Requires prior booking; for more information, contact:  
aapicultora.pt  
+351 917284421 / +351 912233077  
a.apicultora@gmail.com



### **Sport fishing**

Coruche regularly hosts important national, European, and world sport fishing competitions. The fishing spots along the Sorraia River, at the riverside area of Coruche and in Santa Justa (Couço), offer excellent conditions for this sport, thanks to the characteristics of the water quality and the fish wealth of the Sorraia.

Coruche Sport Fishing  
[facebook.com/corpescadesportiva](https://facebook.com/corpescadesportiva)

## Adventure “Off Road”

### **X-Adventure - Tourist Animation Agency**

Activities include orientation, off-road excursions on motorcycle, quad bikes, 4x4 vehicles, and kartcross. Tours in the cork oak forests and nature-related sports.

+351 918753863 / +351 918753864  
x.adventure.cch@gmail.com  
x-adventure.org  
facebook.com/  
X-ADVENTURE-232580490116294

### **Mundo de Aventuras Travel & Expeditions - Adventure Travel Agency**

The main highlight of this operator is the annual organisation of the Sahara Desert Challenge from Coruche, an off-road expedition that takes place between Europe and Africa.

+351 934005110  
info@mundodeaventuras.pt  
mundodeaventuras.pt  
facebook.com/mundodeaventuras.  
travelexpeditions

### **Corklands**

A tourist animation operator that promotes adventure, nature, and cultural discovery events and experiences in the

Montado territories (cycling, walking, running, ballooning, and off-road).

+351 960386079  
info@latitude-longitude.pt  
corklands.pt | facebook.com/corklands

### **Water Skiing and Wakeboarding School**

The Ski Clube Quinta Grande, located 5 km from Coruche, is a space specially designed for the practice of water skiing, wakeboarding, and barefoot skiing, featuring a lake and all the necessary infrastructure for these sports.

+351 243618954 | +351 919418930  
info@skiclube-quintagrande.pt  
skiclube-quintagrande.pt  
facebook.com/Ski-Clube-Quinta-Grande-295442223845927

### **Summer Camp - Radical Adventure**

Located on a farm of about 1.5 hectares, it has a set of available infrastructures such as six dormitories, a wine press, an oven, a picnic park, a swimming pool, and a playground.

aventuraradical.pt  
aventuraradical@sapo.pt  
+351 936425366  
Beco do Açude, Brejoeira,  
2100-672 Santana do Mato  
facebook.com/aventuraradical



**In 2020, the Municipality of Coruche was nominated in seven categories for the 7 Wonders of Popular Culture: Crafts, featuring rush basket weaving; Legends and Myths, with the “Legend of the Town of Coruche”; Festivals and Fairs, with the Historical and Ethnographic Procession; Songs and Dances, with the song “Aqui está Coruche”; Rituals and Customs, showcasing the art of cork harvesting; Processions and Pilgrimages, with the procession in honour of Our Lady of the Castle; and Artefacts, with the cork trough.**

### **Ethnography**

The local ethnography is characterised by the identity of the Coruchense people. The municipality’s folklore groups keep traditions, customs, and practices alive, preserving a heritage collection of incalculable value that contributes to understanding the essence of the collective identity of the Coruchense, establishing a link between individuality and the collective.

### **Crafts**

Local craftsmanship is another distinctive feature of the municipality, reinventing itself over time while never losing the essence of Coruche. It indispensably works with materials such as cork, chintz fabric, wicker, and rush.

Meet the Artisans of Coruche at: [visitcoruche.com/artesanato](http://visitcoruche.com/artesanato)

### **Local Products**

In addition to beef from fighting bulls, regional sausages, and traditional pastries, honey, wine, pine nuts, and rice - especially the “Carolino” variety- are also prominently featured in this category. Some of these products can be purchased at the Loja do Montado located at the Coruche Tourist Office.



**SCAN THIS QR CODE TO LEARN  
MORE ABOUT OUR POPULAR  
CULTURE**



[visitcoruche.pt/culturapopular](http://visitcoruche.pt/culturapopular)



# Gastronomy



**Coruche maintains a strong culinary tradition. The typical dishes reflect the work done in the fields, where labor was rewarded with a rich and well-prepared cuisine, and where regional products were of utmost importance. Events such as the Gastronomy Days, Flavors of the Fighting Bull, or Meat Feasts, annually mark the calendar of activities in the municipality of Coruche, bringing to the table the delicacies of regional recipes, combining tradition and innovation.**



### TRADITIONAL DISHES

Comer de Carne, ou Sopas de Carne  
Sopa de Feijão-Frade do Couço  
Sopa de Feijão com Couve  
Canja de toiro bravo  
Açorda de Sável  
Bacalhau Assado com Migas  
Arroz de Entrecosto  
Migas de Batata com Carne de Porco  
Cabrito Frito à Lavrador  
Febra e Cachola de Azeite e Vinagre  
Farinheira de Sangue  
Espetadas de vitela brava em pau de loureiro  
Favada com nacos de vitela brava

### TRADITIONAL SWEETS

Bolo de Nozes  
Bolo de Mel  
Bolo de Pinhão  
Bolos Brancos  
Arroz Doce  
Areias do Sorraia  
Azevias  
Nógado de Pinhão e Mel  
Bolo Rei de Santana do Mato



## Wines

The wines with a strong colour and flavour are also a mark of the region. Young and aromatic red wines predominate, but fresh whites, very fruity and with tropical aromas, are also an example of quality. The south-Mediterranean climate and the fact that they are produced using a wide variety of grape varieties, such as Touriga Nacional, Trincadeira Preta, Fernão Pires, Chardonnay, or Cabernet Sauvignon, make the wines produced in the region special.

### Wine tourism in coruche

In Coruche, in the Tejo wine region, wine tourism unfolds amidst serene landscapes and authentic flavors. Here you can discover unique vineyards, taste wines marked by the Ribatejo identity, and experience moments of true connection with the land. A visit to the Quinta de Santo André winery stands out as a special opportunity to learn about traditions, experience aromas, and appreciate the art of winemaking with a tour of the cellar and a tasting of the estate's wines.



**Quinta da Arriça**  
Fazendas da Arriça,  
2100-601 Branca  
+351 265897156  
arlindo.marques.botas@gmail.com  
www.quinta-da-arrica.com  
www.facebook.com/Quinta-da-Arriça-103775419700350

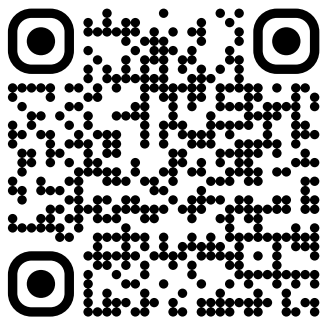
**Quinta de Santo André**  
**M. Veiga Teixeira Unipessoal, Lda.**  
Rua de São Francisco, n.º 2,  
2100-159 Coruche  
+351 243617173  
quinta.sto.andre@gmail.com  
www.facebook.com/QUINTA-SANTOANDRE-201515236586034

**Herdade dos Fidalgos**  
Herdade dos Fidalgos  
2100-653 Biscainho  
+351 243689520  
herdadefidalgos@gmail.com



## Restoration and drinks

In Coruche, every restaurant, café, bar, or pastry shop invites you to savor the region. At the table, Coruche's gastronomy reveals traditions that arrive in generous dishes, aromas of the countryside and the river, sweets made with ancient knowledge, and encounters that extend into tranquil conversations. Between authentic flavors and welcoming atmospheres, each stop is a way to feel the soul of the municipality and experience Coruche through what it knows best: its tables and terraces.



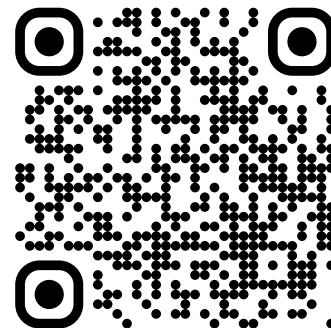
SCAN THIS QR  
CODE TO FIND  
OUT WHERE  
TO FIND OUR  
RESTAURANTS,  
CAFES, BARS, AND  
PASTRY SHOPS.



[visitcoruche.pt/restauracaoebidas](http://visitcoruche.pt/restauracaoebidas)

## Accommodation

In Coruche, the accommodation options are starting points for experiencing the region at a leisurely pace. Among welcoming houses, rural settings, and spaces where comfort meets nature, each stay invites you to breathe in the rhythm of the countryside, discover traditions, explore unique landscapes, and feel the serenity of the Ribatejo region. Here, resting is also experiencing Coruche.



SCAN THIS QR CODE  
TO ACCESS  
THE UPDATED  
LIST OF  
ACCOMMODATION  
ESTABLISHMENTS



[visitcoruche.pt/alojamento](http://visitcoruche.pt/alojamento)

# Events



### **Gastronomy Days**

A unique opportunity to experience the best of the local gastronomy, contributing indelibly to the preservation of Coruche's culinary culture. The programme also offers entertainment and music to delight diners during their meals.

Annual Edition

Participating restaurants in the municipality of Coruche

### **Flavours of the Fighting Bull**

The meat of the fighting bull is the main theme of this unique gastronomic event, which the town of Coruche has been promoting for over a decade and which is associated with the traditional values of bullfighting culture. Every year, Coruche issues the challenge: "Catch the bull... on the plate!"

Annual Edition

Bullring and Sorraia Park

Organised by: Coruche Town Hall



### **FICOR - International Cork Fair**

An event that brings together the main players in this industry in the World Capital of Cork. The fair takes place in the Multi-Purpose Pavilion located in the town centre, with the Cork Oak and Cork Observatory reserved for conferences and debates. A range of activities such as exhibitions, musical performances, a fashion show (Coruche Fashion Cork), and experiences in the montado are also part of the selected programme.

Annual or biennial edition

Sorraia Park, Coruche Multi-Purpose

Pavilion, The Cork and Cork Oak

Observatory

Organised by: Coruche Town Hall and [ficor.com.pt](http://ficor.com.pt)

### **Bridge Race**

The Bridge Race brings together hundreds of athletes, traditionally on the last day of FICOR, and has stood out over the years for its excellent level of organisation and the attractive course that is designed annually. The large turnout for this event is shared with the Family Race, which takes place simultaneously and is dedicated to the general public.

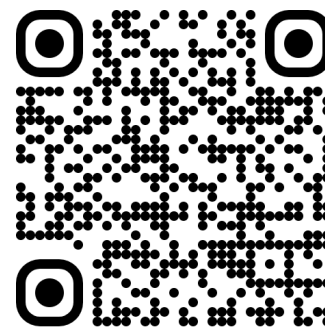
Annual Edition

Town of Coruche

Organised by: Coruche Town Hall



SCAN THIS QR CODE  
TO FIND OUT ABOUT ALL  
THE EVENTS HAPPENING  
IN CORUCHE.



[visitcoruche.pt/calendarioeventos](http://visitcoruche.pt/calendarioeventos)



### 24H BTT Coruche

The 24H BTT CCH mountain bike endurance event takes place over 24 hours through the Lezíria and the Ribatejo heathland on a circuit of approximately 10 km per lap. The most anticipated mountain biking competition in the municipality challenges participants to compete solo or in male, female, or mixed teams of two, four, or six members. As always, surprises and new challenges are guaranteed.

Annual Edition

Sorraia Park and the town of Coruche

Organised by: Coruche Town Hall

24hcoruchebtt.com

### Summer Sounds

The Summer Sounds Music Festival fills the hot nights of the season with a carefully crafted programme that unites bands and artists with diverse sounds and genres, from jazz to popular music, from rock to folk, and always outdoors.

Annual Edition

Town of Coruche

Organised by: Coruche Town Hall

### Youth Festival

Usually, it takes place in July.

The festival includes musical performances, sporting events such as paddle tennis and beach soccer tournaments, kayaking down the river, dance classes, and the traditional Trilha da Coruja race, as well as festive moments with sunsets and nighttime entertainment. This initiative provides the youth of the municipality with a vast programme of diverse activities over three intense days, involving cultural agents, associations, and the entire community. The activities are free and open to the community.

Annual Edition

Sorraia Park, riverside area, and Padel and Tennis courts

### Portugal Triathlon Cup / Aquathlon Events

The riverside area of the town of Coruche annually hosts hundreds of athletes prepared for the challenges posed by the aquathlon and triathlon events held here, sporting up the centre of the town of Coruche and the entire riverside area along the Sorraia River..

Annual Edition

Sorraia Park and riverside area

Organised by: Coruche Town Hall /

Portuguese Triathlon Federation

### Festivities in Honour of Our Lady of the Castle

These are some of the most recognised religious and popular festivities in the country, always attracting thousands of visitors who do not miss the opportunity to visit Coruche during this time of year.

The fireworks, the procession in honour of Our Lady of the Castle, the bullfighting entertainment in the streets of the historic centre, the Historical and Ethnographic Parade on the 17th (municipal holiday and Day of the Campino), are some of the highlights of the festival, which always features major concerts and, of course, excellent Ribatejan cuisine.

Annual Edition

Sorraia Park and the town of Coruche

Organised by: Coruche Town Hall /

Festival Committee



### Coruche Biennial - Art Trails

Launched in 2003, the Biennial has made a remarkable journey in the field of visual arts. Since 2013, the editions held have included outdoor installations, in trails that highlight the urban and architectural values of Coruche, creating a symbiosis between the artwork and the surrounding space.

Biennial Edition  
Town of Coruche  
Org: Coruche Municipal Chamber  
[bienaldecoruche.org](http://bienaldecoruche.org)

### Coruche Book Fair

An event that brings together all generations and offers an excellent opportunity to purchase books at competitive prices. It features invited authors, workshops, lectures, and reading sessions that prioritise thematic quality based on a central theme launched each year.

Annual Edition  
Multi-Purpose Pavilion  
Organised by: Coruche Town Hall



### Comer de Carne - Enogastronomic Show

An event that celebrates and showcases the customs, authenticity, and unique products of Coruche in an immersive experience of tradition and flavours. For two days, the dish "Comer de Carne" is prepared with singular skill and genuineness in restaurants and estates in the region. Authentic gastronomy, excellent wines, and local products come together to celebrate World Wine Tourism Day.

Annual Edition  
Organised by: Coruche Municipal Chamber  
[comerdecarne.pt](http://comerdecarne.pt)



### At Christmas, Coruche is the Place to Be

Every year, Coruche gains even more magic with a diverse program that fills the village with light, music, and tradition. The Christmas Park, the train that runs through the streets, and the many activities for all ages create a unique festive atmosphere. The revitalization of local commerce brings life to the urban center, inviting visitors to discover flavors, gifts, and lots of fun.

Annual Edition  
Vila de Coruche  
Organized by the Municipality of Coruche



## CORUCHE TOURISM

**Visit the Coruche Tourist Office & Montado Shop, located next to the Municipal Market Gallery, and discover great reasons to visit Coruche. During your visit, you can obtain information about what to see and do in Coruche, where to stay or where to eat, and you can also purchase local products.**

posto.turismo@cm-coruche.pt  
+351 243619072

Opening Hours of the Tourist Office (open every day except holidays):  
Hours: From 09:00 to 12:30 and from 14:00 to 17:30

Tourism Service of the Municipality of Coruche  
geral@cm-coruche.pt  
turismo@cm-coruche.pt



## USEFUL CONTACTS

### **CORUCHE TOURISM**

Tel: +351 243619072

### **MUNICIPAL LIBRARY**

Tel: +351 243610212

### **MUNICIPAL FIRE SERVICE**

Tel: +351 243610260

### **CORUCHE TOWN HALL**

Tel: +351 243610200

### **CORUCHE HEALTH CENTRE**

Tel: +351 243610500

### **DELEGATION OF CORUCHE TOWN HALL IN COUÇO**

Tel: +351 243650506

### **PARISH OF BISCAINHO**

Tel: +351 243689115

### **PARISH OF BRANCA**

Tel: +351 243606116

### **PARISH OF CORUCHE**

Telephone: +351 243675622

### **PARISH OF COUÇO**

Tel: +351 243650178

### **PARISH OF FAJARDA**

Telephone: +351 243678189

### **PARISH OF SANTANA DO MATO**

Tel: +351 243677204

### **PARISH OF SÃO JOSÉ DA LAMAROSA**

Tel: +351 243724146

### **PARISH OF VILA NOVA DA ERRA**

Telephone: +351 243679462

### **GNR - CORUCHE STATION**

Tel: +351 243611240

### **CORUCHE MUNICIPAL MUSEUM**

Tel: +351 243610820

### **THE CORK AND CORK OAK OBSERVATORY**

Tel: +351 243611210

### **MUNICIPAL SWIMMING POOLS**

Tel: +351 243610590

### **ZIMB - INDUSTRIAL ZONE OF MONTE DA BARCA**

Municipal Facilities  
Tel: +351 243610230



Coruche Tourism



Coruche a **click** away ✎  
Discover why Coruche Inspires you  
by downloading its **free app!**



**Tripadvisor**

Tourism of Coruche & Montado Store  
Municipal Museum of Coruche  
Cork Oak and Cork Observatory



**Ribatejo**  
Viva a festa

[www.visitribatejo.pt](http://www.visitribatejo.pt)

Translate by: Diana Furtado

**[www.cm-coruche.pt](http://www.cm-coruche.pt)**  
**[www.visitcoruche.pt](http://www.visitcoruche.pt)**  
**[www.visitcoruche.com](http://www.visitcoruche.com)**

2nd edition, January 2026

